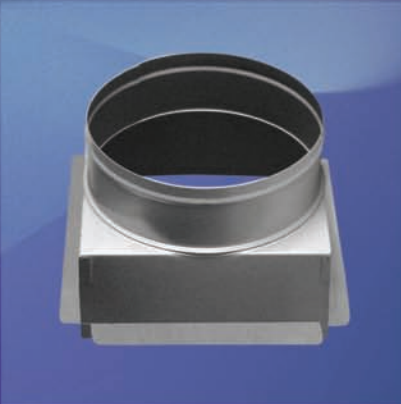
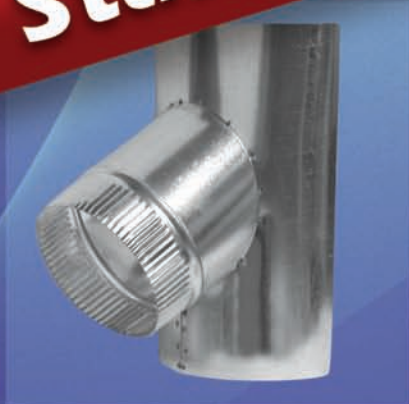
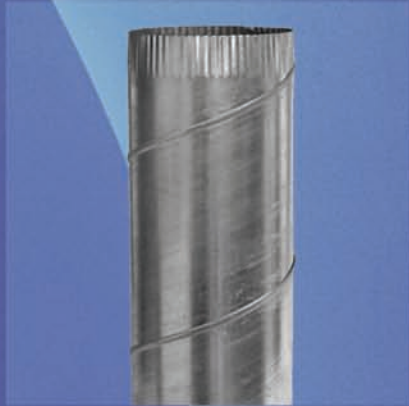




Air Duct Products



Standard 2 Day Shipping



ADP offers standard 2-Day “Quick Ship” service on all the products you see in this catalog at no increase in price for the premium service. For those occasions when even faster shipping is needed we also offer Next Day “Quicker Ship” and Same Day “Quickest Ship” options on most of our products, as follows:

Shipping Options	Lead Time (working days)	Percentage Add	Order Cut-Off Time
<i>Quick Ship orders</i>	2 Days Max	No Add	5:00 pm (Pacific)
<i>Quicker Ship orders</i>	Next Day	15%	5:00 pm (Pacific)
<i>Quickest Ship orders</i>	Same Day	25%	2:00 pm (Pacific)

Straight Talk: While our on-time shipping performance has exceeded 95% for five years running, it is possible that a sudden increase in demand or an unexpected large order could impact our stock, thus our *Quick Ship* options are subject to availability. Please see the Limitations paragraph below for your options, should a shortage occur.

Terms & Conditions

Lead Time: For standard 2-Day *Quick Ship* orders, the lead time clock begins the day after you place your order. For example, if you place your order on a Monday, the next day, Tuesday, is Day 1. You can expect your order to ship no later than Day 2, which would be Wednesday if there are no holidays. Orders entered after 5:00 pm are considered to be entered the next business day.

Quicker and *Quickest Ship* orders work similarly. For example, a Next Day *Quicker Ship* order placed on a Monday will ship the next day, Tuesday. Same Day *Quickest Ship* orders must be placed before 2:00 pm Pacific Time to be shipped the same day. Same day local delivery may also be available on orders placed by 10:00 am. Please call for availability.

Pricing: All prices are list. Please refer to your current Discount Schedule for applicable multipliers. 2-Day shipping is standard (subject to availability). For all orders under \$350 net, a Small Order Freight Add of \$30 will apply.

Freight Terms: All orders are shipped F.O.B. Origin. Actual freight rates will be charged for 2nd Day, Next Day, and Courier shipments, as well as on all orders that do not qualify for Prepaid freight. Please refer to your current Discount Schedule for Freight Factors on orders shipping 500 miles or more from the 92154 zip code.

Limitations: While our goal is to ship orders in two days or less, with our accelerated shipping schedule some shortages may occur. As a result, our *Quick Ship* options are subject to availability. Should we encounter a shortage on a qualified freight Prepaid order we will contact you to determine if you wish the entire order to be held until the shortages arrive (so everything ships prepaid) or if we should ship what we have available. Backorders cannot be shipped prepaid. Any items you instruct us to backorder will ship Prepaid & Add.

Payment terms: 1% 10, Net 30 from the date of our invoice for customers with approved credit. A service charge of 1.5% per month will be charged and collected on all past due account balances. Credit card payment is also accepted at time of purchase only, no discount allowed. Accounts with balances over 45 days old will be on shipping hold.

Returns: Returns will not be accepted unless accompanied by a Return Goods Authorization (RGA) form issued by ADP. Return goods will be inspected upon receipt by ADP and for all products accepted for restocking, 75% of the purchase price (excluding outbound freight) will be refunded. Products which have been installed or damaged (including packaging) are not suitable for restocking and no credit will be given. All returns must be returned to their point of origin, freight prepaid. If requested, we will issue a call tag for items to be returned, in which case return freight charges will be deducted from any credit issued.

Minimum order: For all orders under \$350 net a Small Order Freight Add will apply.

Changes: All orders are subject to a \$10 change fee per line item changed. Upon receipt of a change order, the date the change order is received becomes the new order receipt date and the lead time clock starts anew. Changes can not be accepted on the day of shipment.

Cancellations: Because of our accelerated shipping commitment we begin work on your order immediately upon receipt. Therefore, all orders cancelled after placement or before shipment will be subject to a 15% cancellation charge.

Damage or Loss: Unless otherwise agreed, all shipments are made F.O.B. Origin. ADP will not be responsible for delays in delivery by carrier, for loss or damage to merchandise in transit, for reconsignment fees or for storage fees due to delay in delivery. Where shortages or damages occur, details should be noted on the freight bill by the customer at time of delivery and reported to ADP within ten (10) days of shipment. In case of concealed damage, customer should call the carrier immediately to inspect damaged merchandise. With the exception of UPS and Fed-Ex ground shipments, all claims must be filed direct with the carrier by the customer. However, we will gladly assist our customer in attempting to secure prompt and satisfactory settlement.

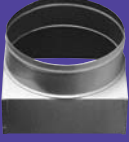
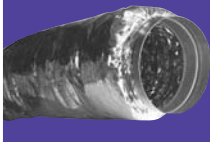



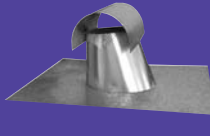
Warranty: ADP warrants our products for a period of twelve (12) months from the date of shipment against defects in materials and workmanship. If a product fails to perform properly within this period, ADP will replace or repair it at our option. This warranty does not extend to and does not cover defects caused by misuse, abuse, accident, improper installation or alteration. This warranty is for materials only and specifically excludes labor for removal or installation, as well as any and all forms of indemnification.

Force Majeure: ADP shall not be liable for delays or defaults in delivery caused by floods, fires, storms or other acts of God, by war or act of public enemy or civil disturbance, strikes, lockouts, shortages of labor or raw materials and suppliers (including fuel) or production facilities, transportation service or equipment shortages or failures, actions or any governmental authority, or other conditions beyond our reasonable control.

Sales: All sales are governed by the Terms and Conditions found on this page. If you do not accept these terms you must notify us within 24 hours of receiving our Acknowledgement. If you accept delivery of our goods, you will be deemed to have accepted these Terms of Sale in full. You further agree that these Terms of Sale supersede any additional or different terms or conditions contained in your purchase order or in any other agreement between you and ADP.

Air Distribution Products

9668 Heinrich Hertz Drive #D, San Diego, CA 92154 • Ph: (800) 322-8676 Fx: (800) 604-3324

	Square Adapters & Ceiling Boxes Page 1		Flexible Air Ducts Page 5
	Pancake & Taper Reducers Page 2		Spiral & Snap Lock "KD" Pipe Page 6
	Elbow, Saddle Taps & Tee Wyes Pages 3-4		Flat Stock, Eye Brows, Dryer Vents & Tee Tops Page 7

Square Adapters & Ceiling Boxes

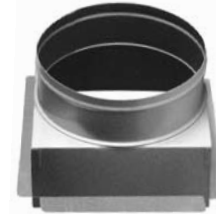


Features:

- 24 Gauge galvanized steel construction
- 2.5" collar with raised bead
- Interior painted flat black
- Ceiling box is prefabricated with flanges



STR
Round Neck
Adapters



STRF
Ceiling Box

STR Size	Gauge	Diameter											
		04" SKU	05" SKU	06" SKU	07" SKU	08" SKU	09" SKU	10" SKU	12" SKU	14" SKU	16" SKU	18" SKU	20" SKU
6"x 6"	24	20 55219	20 55220	20 55221	-	-	-	-	-	-	-	-	-
8"x 8"	24	-	-	22 55222	22 55223	22 55224	-	-	-	-	-	-	-
9"x 9"	24	-	-	26 55225	-	26 55227	26 55228	-	-	-	-	-	-
10"x 10"	24	-	-	26 55229	26 55230	26 55231	26 55232	26 55233	-	-	-	-	-
12"x 12"	24	-	-	27 55234	27 55235	27 55236	27 55237	27 55238	27 55239	-	-	-	-
14"x 14"	24	-	-	-	-	32 55240	32 55241	32 55242	32 55243	32 55244	-	-	-
15"x 15"	24	-	-	-	-	34 55245	-	34 55247	34 55248	34 55249	-	-	-
16"x 16"	24	-	-	-	-	34 55250	-	34 55251	34 55252	34 55253	34 55254	-	-
18"x 18"	24	-	-	-	-	44 55255	-	44 55256	44 55257	44 55258	44 55259	44 55260	-
20"x 20"	24	-	-	-	-	50 55261	-	50 55262	50 55263	50 55264	50 55265	50 55266	50 55267
22"x 22"	24	-	-	53 55273	-	53 55274	53 55275	53 55276	53 55277	53 55278	53 55279	53 55280	53 55281
23.5"x 23.5"	24	-	-	70 55296	-	-	-	-	-	-	-	-	-
22"x 10"	24	-	-	45 55268	-	45 55270	-	45 55271	51 55272	-	-	-	-
23.5"x 11.5"	24	-	-	-	-	57 55282	57 55283	57 55284	57 55285	-	-	-	-
46" x 22"	24	(Square pan only – hole is field cut)											131 55199

STRF Size	Gauge	Diameter											
		04" SKU	05" SKU	06" SKU	07" SKU	08" SKU	09" SKU	10" SKU	12" SKU	14" SKU	16" SKU	18" SKU	20" SKU
6"x 6"	24	-	16 55294	16 55295	-	-	-	-	-	-	-	-	-
8"x 8"	24	-	19 55296	19 55297	19 55298	19 55299	-	-	-	-	-	-	-
10"x 10"	24	-	-	21 55300	21 55301	21 55302	21 55303	21 55304	-	-	-	-	-
12"x 12"	24	-	-	-	24 55305	24 55306	24 55307	24 55308	24 55309	-	-	-	-
14"x 14"	24	-	-	-	-	-	-	27 55319	27 55310	27 55311	-	-	-
16"x 16"	24	-	-	-	-	-	-	30 55312	30 55313	30 55253	30 55314	-	-
18"x 18"	24	-	-	-	-	-	-	-	33 55315	33 55316	33 55317	33 55318	-

Pancake Reducers



Pancake Reducer Features:

- 24 Gauge galvanized steel construction
- 2.5" collar with raised bead
- Interior painted flat black

RTR
Pancake Reducer



RTR Size	Gauge	List Price	SKU
6" x 4"	24	14	55200
6" x 5"	24	14	55201
8" x 6"	24	16	55202
8" x 7"	24	16	55203
10" x 6"	24	22	55204
10" x 7"	24	22	55205
10" x 8"	24	22	55206
10" x 9"	24	22	55207
12" x 6"	24	23	55208
12" x 7"	24	23	55209

RTR Size	Gauge	List Price	SKU
12" x 8"	24	23	55210
12" x 9"	24	23	55211
12" x 10"	24	23	55212
14" x 10"	24	27	55213
14" x 12"	24	27	55214
16" x 12"	24	28	55215
16" x 14"	24	28	55216
18" x 14"	24	31	55217
18" x 16"	24	31	55218

Taper Reducers



TRSF
Sure Fit



TR
Taper 8" High

TAPERS

Size	Gauge	List Price	SKU
6" x 5"	26	12	71309
8" x 6"	26	16	71310
8" x 7"	26	16	71311
9" x 8"	26	19	71312
10" x 6"	26	22	71313
10" x 7"	26	22	71314
10" x 8"	26	22	71315
10" x 9"	26	22	71316
12" x 8"	26	24	71317
12" x 9"	26	24	71318
12" x 10"	26	24	71319
14" x 10"	24	30	71320
14" x 12"	24	30	71321
16" x 12"	24	36	71322
16" x 14"	24	36	71323
16" x 15"	24	36	71324

SURE FIT TAPERS

Size	Gauge	List Price	SKU
8" x 6"	26	20	71304
10" x 8"	26	22	71305
12" x 10	26	26	71306
14" x 12"	24	37	71307
16" x 14"	24	54	71308

Adjustable 90° Elbows



Features:

- Galvanized
- Short radius



ELBOW
SHORT90

Size	Gauge	List Price	SKU
4"	26	5	71132
5"	26	7	71133
6"	26	8	71134
7"	26	10	71135
8"	26	11	71136
9"	26	13	71137

Size	Gauge	List Price	SKU
10"	26	14	71138
12"	26	23	71139
14"	24	33	71140
16"	24	45	71141
18"	24	57	71142
20"	24	69	71143

Saddle Taps

Features:

- 45° Saddle Tap
- Galvanized
- Available on round or flat



SADDLE TAP FLAT



SADDLE TAP ROUND
(shown installed)

SADDLE TAPS ON FLAT

Size	Gauge	List Price	SKU
6" on Flat	26	30	71244
8" on Flat	26	36	71249
10" on Flat	26	43	71254
12" on Flat	26	43	71258
14" on Flat	26	48	71261

SADDLE TAPS ON ROUND

Size	Gauge	List Price	SKU
6" on 8"	26	30	71245
6" on 10"	26	30	71246
6" on 12"	26	30	71247
6" on 14"	26	30	71248
8" on 10"	26	36	71250
8" on 12"	26	36	71251
8" on 14"	26	36	71252
8" on 16"	26	36	71253
10" on 12"	26	43	71255
10" on 14"	26	43	71256
10" on 16"	26	43	71257
12" on 14"	26	43	71259
12" on 16"	26	43	71260
14" on 16"	24	54	71262
14" on 18"	24	54	71263

Tee Wyes



Features:

- 45° Tee Wyes
- Galvanized



TEE WYE

TEE WYES

Size	Gauge	List Price	SKU
6" x 4" x 4"	26	21	71333
8" x 6" x 6"	26	28	71336
8" x 8" x 8"	26	28	71337
9" x 7" x 7"	26	32	71338
10" x 8" x 6"	26	37	71339
10" x 8" x 8"	26	37	71340
10" x 10" x 8"	26	37	71341
10" x 10" x 10"	26	37	71342
12" x 8" x 8"	26	40	71343
12" x 10" x 8"	26	40	71344
12" x 10" x 10"	26	40	71345
12" x 12" x 8"	26	40	71346
12" x 12" x 10"	26	40	71347
12" x 12" x 12"	26	40	71348

TEE WYES

Size	Gauge	List Price	SKU
14" x 10" x 10"	24	46	71349
14" x 12" x 10"	24	46	71350
14" x 12" x 12"	24	46	71351
14" x 14" x 8"	24	46	71352
14" x 14" x 14"	24	46	71353
16" x 12" x 12"	24	60	71354
16" x 14" x 10"	24	60	71355
16" x 14" x 12"	24	60	71356
16" x 14" x 14"	24	60	71357
16" x 16" x 16"	24	60	71358
18" x 14" x 14"	24	79	71359
18" x 16" x 12"	24	79	71360
18" x 18" x 18"	24	79	71361

Caps & Collars



CAP



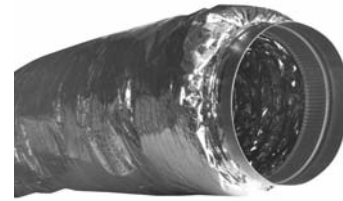
START COLLAR

Size	Gauge	CAPS List Price	SKU	COLLARS List Price	SKU
4"	26	12	71230	4	71292
5"	26	13	71231	4	71293
6"	26	15	71232	5	71294
7"	26	17	71233	6	71295
8"	26	18	71234	6	71296
9"	26	21	71235	7	71297
10"	26	23	71236	7	71298
12"	26	28	71237	9	71299
14"	24	39	71238	10	71300
16"	24	48	71239	11	71301
18"	24	60	71240	14	71302
20"	24	70	71241	17	71303

Alumicore & Polycore

Features:

- UL 181 Class 1 Air Duct
- Metalized silver jacket
- R-4 Flex available
- California Title 24 compliant: R-6 Flex, R-8 Flex



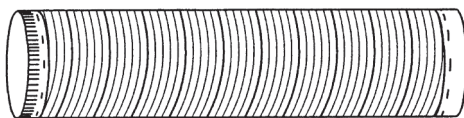
STR Size	TFA-Alumicore						TFP-Polycore											
	Bare		R-4.2		R-8		R-4.2				R-6				R-8			
	6 Ft. CBE		6 Ft. CBE		6 Ft. CBE		6 Ft. CBE		25 Ft. RAW		6 Ft. CBE		25 Ft. RAW		6 Ft. CBE		25 Ft. RAW	
	List	SKU	List	SKU	List	SKU	List	SKU	List	SKU	List	SKU	List	SKU	List	SKU	List	SKU
4"	25	73116	-	-	-	-	41	73167	-	-	51	73179	74	73236	-	-	-	-
5"	29	73117	48	73127	-	-	47	73168	72	73225	56	73180	86	73237	-	-	-	-
6"	32	73118	53	73128	72	73138	51	73169	81	73226	60	73181	97	73238	78	73193	122	73249
7"	37	73119	58	73129	-	-	56	73170	88	73227	67	73182	106	73239	-	-	138	73250
8"	41	73120	64	73130	90	73140	61	73171	96	73228	72	73183	109	73240	93	73195	150	73251
9"	47	73121	70	73131	103	73141	66	73172	108	73229	79	73184	130	73241	-	-	163	73252
10"	52	73122	80	73132	113	73142	74	73173	120	73230	87	73185	144	73242	113	73197	179	73253
12"	63	73123	94	73133	136	73143	88	73174	144	73231	102	73186	180	73243	133	73198	222	73254
14"	73	73124	107	73134	150	73144	109	73175	175	73232	113	73187	217	73244	161	73199	269	73255
16"	84	73125	125	73135	173	73145	123	73176	210	73233	139	73188	253	73245	180	73200	323	73256
18"	99	73126	141	73136	-	-	143	73177	240	73234	164	73189	289	73246	213	73201	347	73257
20"	-	-	-	-	-	-	166	73178	310	73235	194	73190	353	73247	252	73202	366	73258

Duct Size	Damper Kit	SKU
4"	8	71108
5"	9	71109
6"	9	71110
7"	10	71111
8"	11	71112
9"	12	71113

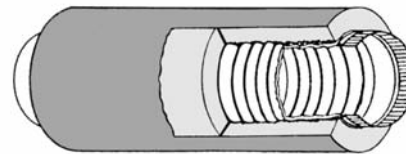
Duct Size	Damper Kit	SKU
10"	12	71114
12"	18	71115
14"	18	71116
16"	18	71117
18"	20	71118
20"	23	71119

Key to Abbreviations:
CBE = Collars Both Ends
RAW = Raw flex, no collars

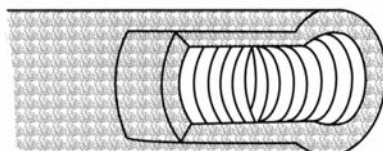
Alumicore (Bare): TFA06B CBE



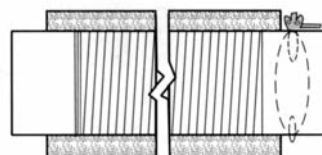
Alumicore (Wrapped): TFA06R CBE



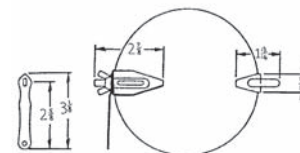
Polycore: TFP25R RAW



Polycore: TFP06 CBE
(Damper kit sold separately)



Disc Damper Kit



Spiral Pipe Features:

- 7-1/2 ft. lengths for job site elevator mobility
- UMC gauges
- Crimped one end
- 10 ft. lengths available upon request



SPIRAL PIPE

KD Pipe Features:

- 36” lengths
- Snap lock
- UMC gauges



“KD” PIPE

Size	Gauge	SPIRAL PIPE List Price	SKU	KD PIPE List Price	SKU
4”	26	32	71275	14	71159
5”	26	35	71276	17	71160
6”	26	42	71277	19	71161
7”	26	48	71278	22	71162
8”	26	54	71280	25	71163
9”	26	61	71281	28	71164
10”	26	69	71282	30	71165
12”	26	81	71283	38	71166
14”	26	95	71284	51	71167
16”	26	108	71285	56	71168
18”	24	163	71286	67	71169
20”	24	182	71287	78	71170

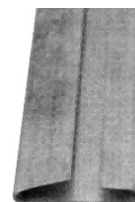
S & Drive

Features:

- 10’ Length
- Galvanized



S&D S Lock 26GA



S&D Drive 26GA



STANDING S 26GA

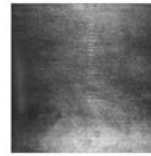
Model	List Price	SKU
Drive 26GA	6	71242
S-Lock 26GA	11	71243
STANDING S 26GA	23	71291

Flat Stock



Features:

- 36" x 36" square piece
- 26 gauge sheet metal
- Larger sizes available upon request



FLAT STOCK



CUSTOM SIZE FLAT STOCK

Model	Description	List Price	SKU
FLAT STOCK	36" x 36", 26 Gauge Flat Stock Sheet	35	71153

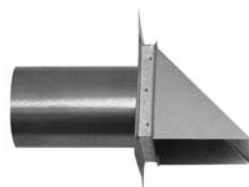
Eyebrows, Dryers Vents & Tee Tops

EYEBROWS

Size	Gauge	List Price	SKU
4"	26	22	71151
6"	26	28	71152



EYEBROW



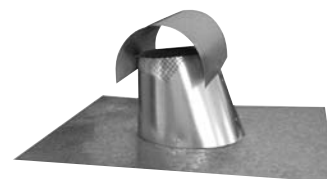
DRYER VENT

DRYER VENTS

Size	Gauge	List Price	SKU
4"	26	41	71120
5"	26	52	71121
6"	26	52	71122
8"	26	54	71123
10"	26	54	71124

TEE TOPS

Size	Gauge	List Price	SKU
4"	26	32	71325
5"	26	32	71326
6"	26	36	71362
7"	26	36	71327
8"	26	58	71328
10"	26	88	71329
12"	26	140	71330



TEE TOP



- Same Day, Next Day and Standard 2-Day shipping options
- Next day delivery on orders placed as late as 5pm Eastern time
- The largest inventory of Fans, Dampers, and Air Distribution in the country
- Quality products with features and designs that save time and money
- Value by providing a premium service without the premium price



Air Distribution Products stocked		
Series	Description	Types/Sizes
APC	Perforated Diffusers – Curved Blade	191
APM	Perforated Diffusers – Modular	75
APA	Perforated Diffusers – Deflectors	12
APR	Perforated Returns	94
APX	Perforated Return Screens	7
AC	Cone Diffusers – Lay-in	16
AO	Architectural Plaque Diffusers – Lay-in	16
AL	Louvered Diffusers – Surface & Lay-in	20
AM	Modular Diffusers – Surface & Lay-in	27
CB	Curved Blade Diffusers – Surface	30
AR	Round Spun Diffusers – 2 & 3 Cone	18
ALS	Linear Slot Diffusers – 4 ft & 8 ft	32
ALSP	Plenums for Linear Slot Diffusers – 4 ft	20
AAB	Linear Air Bar Diffusers – 10 ft	14
AABP	Plenums for Linear Air Bar – 3 ft, 4 ft & 5 ft	23
DR	Drop Down Diffusers	8
DDV	Double Deflection Registers	129
FBH	Fixed Bar Return Grilles – Surface & Lay-in	244
FBHF1	Filter Return Grilles – Lay-in	7
EC	Egg Crate Return Grilles – Surface & Lay-in	20
ECF1	Egg Crate Filter Grille – Lay-in	6
HLF	Hard Lid Rapid Mount Ceiling Frames	6
OBDB	Opposed Blade Dampers – Black	60
BBD	Round Butterfly Dampers	14
SBD	Round Sliding Blade Dampers	5
STR	Square to Round Adapters – Black Interior	68
RTR	Round to Round Adapters – Black Interior	19

Air Device Products stocked		
Series	Description	Types/Sizes
SDT	Single Duct VAV Terminals	9
COIL	Hot Water Reheat Coils – 1 & 2 Row	14
ATTEN	Attenuators & End Caps	12
PNEU	Pneumatic Controls & Accessories	17
DIGI	Digital Controls & Accessories	14

Air Damper Products stocked		
Series	Description	Types/Sizes
FS3	Vertical F/S dampers, UL Class II, 350°	79
FS3	Corridor F/S dampers, UL Class II, 350°	28
DWD	Dynamic Curtain Type Fire Dampers	11
CRD	Ceiling Radiation Dampers	18
ANGLE	Retaining Angles & Flange Sets	24
RBDE	Round Balancing Damper, Electric Remote Powered	9
RBDEC	Hand Held Controllers, Terminals & Cable	18
RBDDB	Round Balancing Damper, Bowden	9
RBDDBC	Bowden Controllers & Cable	5
RBD	Round Balancing Damper with Quadrant	10
DISC	Disc Damper Kits	12
BDDR	Round Backdraft Dampers	8
BDDS	Backdraft Dampers – Steel	21
BDDA	Backdraft Dampers – Aluminum	11
CD1	Control Dampers – Aluminum	10
SB	Single Blade Economy Balancing Dampers	6
MD	Opposed Blade Balancing Dampers	9
BV	Brick Vents	4
DAL	Fixed Louvers, Drainable Blades & Jamb	6

Access Door Products stocked		
Series	Description	Types/Sizes
ADSM	Classic Sheet Metal Door, Hinged w/Cams	8
ADFR	1.5 HR Fire Rated Doors, UL & CSFM	3
ADMU	Multi-Use Doors, Hinged & Latched	8
ADLP	Low Pressure Spiral Duct Doors w/Latches	12
ADSD	Sandwich Type Spiral Duct Doors w/Knobs	9
ADSO	Oval Access Doors w/Cams & Chains	5
ADZL	Zero Leak Access Doors, Hinged w/Cams	16

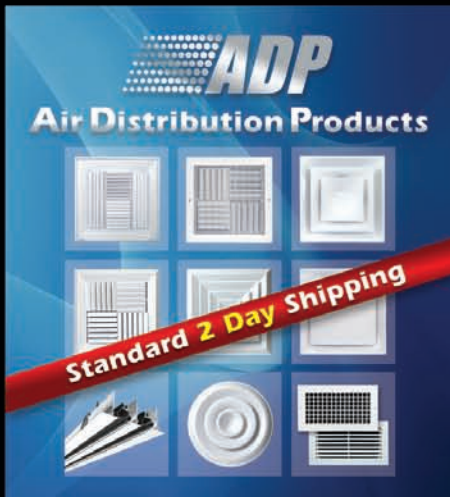
Air Delivery Products stocked		
Series	Description	Types/Sizes
DCR	Roof Exhaust, Downblast Direct, UL705	21
BCR	Roof Exhaust, Downblast Belt, UL705	48
BCRU	Roof Exhaust, Upblast Belt, UL762	41
DSI	Inline, Direct Drive, Square, UL705	16
BSI	Inline, Belt Drive, Square, UL705	64
RSV	Round Spun Gravity Ventilators	12
CURB	Canted & Vented Roof Curbs	15
BDDS	Backdraft Dampers – Steel	21
BRO	Broan Ceiling & Cabinet Fans	16
BROI	Broan Inline Adapter Kits	14
JCS	Jacks, Caps & Switches	9
PANA	Panasonic Ceiling Fans	10
PANI	Panasonic Inline & Wall fans	5
CA/R	Round Inline Fans, Steel & Plastic	8
DQ	Dryer Vent Booster Fans – Cleanable	2
ISO	Vibration Isolation Mounts & Hangers	20

Air Duct Products stocked		
Series	Description	Types/Sizes
TFP	Poly Flex Duct	64
TFA	Aluma-Core Flex Duct, 6 ft CBE, Bare	32
SM	Galvanized Saddle Taps, T-Wyes & Elbows	58
SM	Galvanized Spiral Duct, KD Pipe & Caps	38
SM	Galvanized Tapers & Start Collars	33
SM	Galvanized Tee Tops w/Screen	6

Please visit our website for a complete list of products available

Ph 800.322.8676 • www.adp-hvac.com • Fx 800.604.3324

All this ships in **2 Days** or less! Who knew?



ADP
Air Distribution Products

Standard 2 Day Shipping

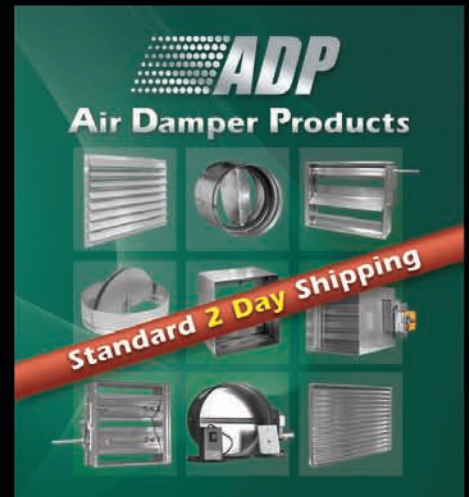
This banner features a blue background with a grid of nine images showing various air distribution products such as diffusers, registers, and grilles.



ADP
Air Device Products

Standard 2 Day Shipping

This banner features a yellow background with a grid of nine images showing various air device products including coils, filters, and control boxes.



ADP
Air Damper Products

Standard 2 Day Shipping

This banner features a green background with a grid of nine images showing various air damper products such as dampers, valves, and actuators.



ADP
Air Delivery Products

Standard 2 Day Shipping

This banner features a yellow background with a grid of nine images showing various air delivery products including fans, blowers, and air handlers.



ADP
Access Door Products

Standard 2 Day Shipping

This banner features a red background with a grid of nine images showing various access door products including doors, frames, and seals.



ADP
Air Duct Products

Standard 2 Day Shipping

This banner features a blue background with a grid of nine images showing various air duct products including elbows, tees, and reducers.



Serving the HVAC Industry Since 1952

Ph 800.322.8676 • www.adp-hvac.com • Fx 800.604.3324

9668-D Heinrich Hertz Drive, San Diego, CA 92154